

# Covid-19 Home Learning Information



# Individuals Isolating

**In the event that your child needs to isolate but the rest of their class remains in school:**

Please notify us via the school office as soon as possible.



We will be in contact to discuss arrangements for providing a 'Free School Meal' hamper (if you are entitled) and home learning.

On this first day your child should use the online subscriptions we provide to access learning. You can find links to these on our school website and your child's class teacher will be able to provide a reminder of log in details should you have misplaced them.

Work will be sent home by the class teacher via the school office. This work will mirror the work that is being completed in class so that they remain up to date with their learning and are able to transition easily back into school following the isolation period.

Your child will work a day behind their class, so that teachers can provide any appropriate and helpful scaffolds.

## **Collection/ Delivery of Learning**

For speed and convenience home learning will be sent via email (please ensure that we have an up to date email address for you in school). If you would prefer a hard copy of the learning, rather than email, please be mindful that this will be either hand delivered when staff are available to do so or posted. Where possible, it would be helpful if you could identify another family member/ friend who lives nearby who is willing to collect the pack of learning on your behalf.



## **Ongoing Communication**

Please keep in contact with your child's class teacher about how they are getting on with their learning (via Dojo or email to the office), to enable the teacher to better meet their home learning needs.

You will receive a copy of the class timetable, so you will know the learning to expect each day (remember they are working a day behind their class). Please be aware that a full day of learning in school may take your child a shorter amount of time to complete when working at home!

Please be mindful that, in these circumstances, teachers are still teaching the rest of the class during school hours and so home learning for your child will look very different to remote learning for a whole class.



# Classes/ Bubbles Closed

If we need to close a year group or class bubble, we will notify you as soon as possible via email and text.

**Please make sure that we have your up to date contact details.**

Where whole classes are learning remotely, we will be using 'Google Classroom' to provide a continuity of education.



## Login Details

Your child will have received their 'Google Classroom' login details. In Year R and KS1 these details will have come to you and in KS2 children will have already logged into their online classroom in school. If you are not aware of these or have misplaced them, please contact your child's class teacher.

There are two days of learning already available for your child to access in their 'Google Classroom'. This will be used for the first two days of closure, whilst the teacher prepares online content for day 3 onwards.

The learning from day 3 onwards will be a continuation of their learning in class to help ensure that at the end of the isolation period, children can return to the curriculum in school with little need for catch up and are able to continue with the planned sequence of learning.

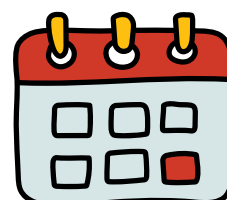
Where there is new content for children to learn, teachers will provide video explanations to support them (these may be their own class teacher on video or a link to an external video).

## Handing in Learning

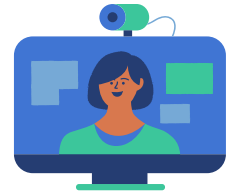
Children will be able to submit work online through 'Google Classroom' so that teachers can best meet their needs. They will also be able to interact with their class teacher and ask any questions through this platform.

There will not be a strict daily timetable for this learning as we understand that families have limited devices and parents may also be working remotely. Learning will be set through 'Google Classroom', but not all activities will be device based.

Further details of what to expect in these circumstances can be found in our '[Remote Learning Policy](#)', on our school website.



# FAQs for Bubble Closure



## **My child is off school as they are ill- can I ask for work to be sent home?**

We will **not** be providing remote learning for children who are off sick for a few days. The priority for your child during these days should be on resting, getting well and getting back to school as soon as possible. This is no change to how we would have operated in the past.

## **What is the expectation for the completion of work?**

All work set by your child's class teacher is expected to be completed and submitted through the procedures as detailed on the previous pages. This is important to enable your child to keep up with the rest of their class and easily transition back into school following any isolation period.

## **Will teachers be broadcasting 'live lessons' if a bubble closes?**

We won't be making use of daily 'live' lessons, as we understand the need for flexibility for families where there may be multiple children at home needing to access learning as well as parents needing to remote work.

Teachers will be streaming a 'live' lesson at least once a week and this will be timetabled to ensure that it does not clash with the lesson of another class. Any new content will be delivered through these live lessons or through the use of a high quality online video alternative from sites such as BBC Bitesize, Oak Academy or the NCETM. If your child is unable to attend 'live' we will endeavour to make the recording of the session available to view at another time.

## **Will teacher mark work set during the self-isolation period?**

Teachers will be monitoring all learning submitted through 'Google Classroom' and will give more in depth feedback on one piece of writing, maths and project work for each child each week. Some pieces of learning will be marked automatically e.g. where a Google Form is used, and provide an overview of how the children are getting on.

Work completed offline should be brought back to school at the end of the isolation period. Teachers will be pleased to see this learning and will discuss it with the children, but will not be marking all pieces individually.

## **We only have access to a smart phone at home for the internet- how will my child access the learning?**

The information about internet and device access which parents provided through the survey earlier in the year will be used to help us provide support and resources where possible. If you have indicated to us on the survey that you would have a barrier, we may have a discussion with you about how we can enable your child to access the learning. Hard copies of learning packs will only be provided where there are significant barriers that we are unable to find a way to overcome.

